

TITANO Range

Symmetrical and asymmetrical medium-power floodlights



Medium-power symmetrical and asymmetrical floodlight.

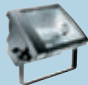

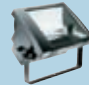
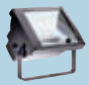
- IP66 protection class;
- Easy wiring and maintenance without pointing variation;
- Independent opening of the optic compartment and the electrical accessory compartment;
- Fully removable electrical accessory plate;
- Front opening through inox steel clips;
- ATEX versions available.

TITANO RANGE

SYMMETRICAL AND ASYMMETRICAL MEDIUM-POWER FLOODLIGHTS

GEWISS

TITANO RANGE

TITANO									
Power (W)	Lamp type	Lamp current (A)	Lamp holder	OPTICS					
									
				Standard	ATEX	Standard	ATEX	Standard	Standard
230V 50Hz									
250	MT	3	E40	GW 84 461 M	GW 84 581 M	GW 84 491 M	GW 84 591 M	GW 84 520 M	GW 84 551 M
400		4.2	E40	GW 84 464 M	GW 84 583 M	GW 84 494 M	GW 84 593 M	GW 84 522 M	GW 84 553 M
250	MT*	2.2	E40	GW 84 465 M	GW 84 582 M	GW 84 495 M	GW 84 592 M	GW 58 521 M	GW 84 552 M
400		3.4	E40	GW 84 466 M	GW 84 584 M	GW 84 496 M	GW 84 594 M	GW 84 523 M	GW 84 554 M
150	ST	1.8	E40	GW 84 460 S					
250		3	E40	GW 84 461 S	GW 84 581 S	GW 84 491 S	GW 84 591 S	GW 84 520 S	GW 84 551 S
400		4.2	E40	GW 84 464 S	GW 84 583 S	GW 84 494 S	GW 85 593 S	GW 84 522 S	GW 84 553 S
250	QE	2.2	E40	GW 84 462 Q					
240V 50Hz									
250	MT	3	E40	GW 84 471 M		GW 84 501 M		GW 84 530 M	GW 84 561 M
400		4.2	E40	GW 84 474 M		GW 84 504 M		GW 84 532 M	GW 84 563 M
250	MT*	2.2	E40	GW 84 475 M		GW 84 505 M		GW 58 531 M	GW 84 562 M
400		3.4	E40	GW 84 476 M		GW 84 506 M		GW 84 533 M	GW 84 564 M
150	ST	1.8	E40	GW 84 470 S					
250		3	E40	GW 84 471 S		GW 84 501 S		GW 84 530 S	GW 84 561 S
400		4.2	E40	GW 84 474 S		GW 84 504 S		GW 84 532 S	GW 84 563 S
250	QE	2.2	E40	GW 84 472 Q					
220V 60Hz									
250	MT	3	E40	GW 84 481 M		GW 84 511 M		GW 84 540 M	GW 84 571 M
400		4.2	E40	GW 84 484 M		GW 84 514 M		GW 84 542 M	GW 84 573 M
250	MT*	2.2	E40	GW 84 485 M		GW 84 515 M		GW 58 541 M	GW 84 572 M
400		3.4	E40	GW 84 486 M		GW 84 516 M		GW 84 543 M	GW 84 574 M
150	ST	1.8	E40	GW 84 480 S					
250		3	E40	GW 84 481 S		GW 84 511 S		GW 84 540 S	GW 84 571 S
400		4.2	E40	GW 84 484 S		GW 84 514 S		GW 84 542 S	GW 84 573 S
250	QE	2.2	E40	GW 84 482 Q					
NON WIRED									
MAX. 400			E40	GW 84 433		GW 84 434		GW 84 435	GW 84 436

* Lamp with 0.7÷1 kV striking voltage.

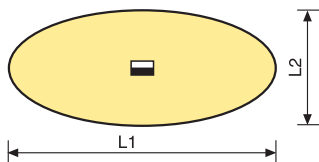
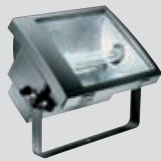
TITANO RANGE

SYMMETRICAL AND ASYMMETRICAL MEDIUM-POWER FLOODLIGHTS



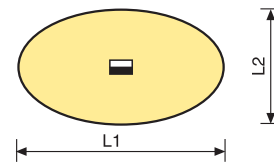
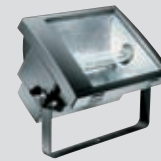
TITANO RANGE

250W MT DIFFUSED SYMMETRICAL OPTICS



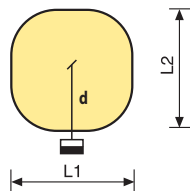
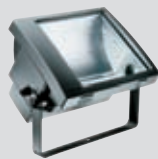
installation height	L1xL2	E max	E med.	UNIFORMITY
8m	10x4	165	111	0.65
10m	12.5x5	107	67	0.63
12m	15x7	74	48	0.64

400W MT DIFFUSED SYMMETRICAL OPTICS



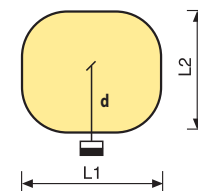
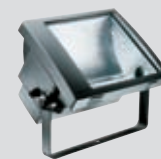
installation height	L1xL2	E max	E med.	UNIFORMITY
8m	10x5	255	171	0.67
10m	13x7	165	103	0.63
12m	15x8	115	74	0.65

250W MT DIFFUSED ASYMMETRICAL OPTICS



installation height	L1xL2	d	E max	E med.	UNIFORMITY
8m	11.5x11.5	5m	80	52	0.61
10m	15x14	5.5m	50	32	0.61
12m	17x17	6m	36	22	0.61

400W MT DIFFUSED ASYMMETRICAL OPTICS



installation height	L1xL2	d	E max	E med.	UNIFORMITY
8m	10x8	4.5m	136	97	0.72
10m	14x13	5.5m	88	55	0.62
12m	17x14	6m	61	39	0.63

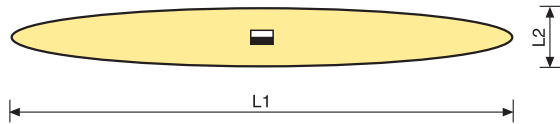
TITANO RANGE

SYMMETRICAL AND ASYMMETRICAL MEDIUM-POWER FLOODLIGHTS



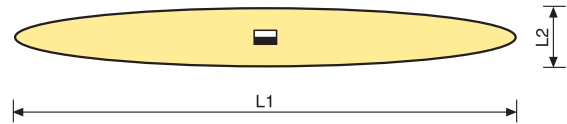
TITANO RANGE

250W MT RESTRICTED BEAM SYMMETRICAL OPTICS



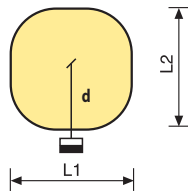
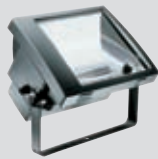
installation height	L1xL2	E max	E med.	UNIFORMITY
8m	11x1	421	321	0.79
10m	14x1.5	294	176	0.6
12m	16.5x2	216	138	0.64

400W MT RESTRICTED BEAM SYMMETRICAL OPTICS



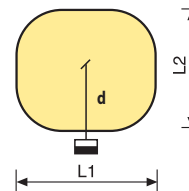
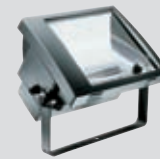
installation height	L1xL2	E max	E med.	UNIFORMITY
8m	11x1	617	365	0.59
10m	14x1.5	423	265	0.63
12m	16.5x2	310	201	0.65

250W MT RESTRICTED BEAM ASYMMETRICAL OPTICS



installation height	L1xL2	d	E max	E med.	UNIFORMITY
8m	12x12	4m	84	47	0.56
10m	15x13	4.5m	53	32	0.6
12m	17x16	5m	38	23	0.61

400W MT ASYMMETRICAL RESTRICTED BEAM OPTICS



installation height	L1xL2	d	E max	E med.	UNIFORMITY
8m	13x11	4.5m	133	78	0.58
10m	16x13	5m	88	50	0.57
12m	19x15.5	5.5m	61	36	0.59