



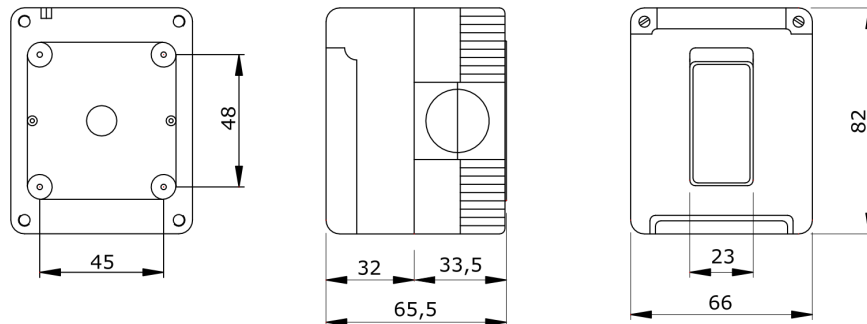
A complete, versatile system of modular containers, perfectly integrable in the SYSTEM domestic range and able to meet the high protection installation requirements of the residential, commercial and industrial sectors. The 27 COMBI range is available both in the IP40 version and in watertight versions with IP55, IP65 and IP66 degree of protection, recommended for all outdoor applications which are subjected to extreme atmospheric conditions.

|                                       |                              |                               |                          |
|---------------------------------------|------------------------------|-------------------------------|--------------------------|
| <b>Insulation class</b>               | II                           | <b>Colour</b>                 | Grey RAL 7035            |
| <b>Outer dim. LxHxD (mm)</b>          | 66x82x65                     | <b>IP degree</b>              | IP55                     |
| <b>No. knockout holes Ø23</b>         | 3 on sides / 1 on the bottom | <b>Lid screws</b>             | Stainless steel          |
| <b>N. holes Ø 23 with cable gland</b> | 1                            | <b>Description</b>            | One-way switch 2P - 16AX |
| <b>Glow Wire Test</b>                 | 650 °C                       | <b>Door type</b>              | With membrane            |
| <b>Voltage</b>                        | 250 V ac                     | <b>Electrocod</b>             | 0130                     |
| <b>Thermo-pressure with ball</b>      | 70 °C                        | <b>Standard</b>               | EN 60669-1               |
| <b>Installation temperature</b>       | -25 +60 °C                   | <b>Type of knockout holes</b> | Removable with tool      |
| <b>Door colour</b>                    | Transparent                  |                               |                          |

#### BEHAVIOUR WITH CHEMICAL AND ATMOSPHERIC AGENTS

| Saline solution | Acids              |           | Bases        |           | Solvents           |               |               |               | Mineral oil        | UV rays   |
|-----------------|--------------------|-----------|--------------|-----------|--------------------|---------------|---------------|---------------|--------------------|-----------|
|                 | Concentrated       | Diluted   | Concentrated | Diluted   | Hexane             | Benzol        | Acetone       | Alcohol       |                    |           |
| Resistant       | Limited resistance | Resistant | Resistant    | Resistant | Limited resistance | Not resistant | Not resistant | Not resistant | Limited resistance | Resistant |

#### DIMENSIONAL



#### TECHNICAL SYMBOLOGY



IP55

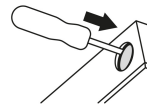


650 °C



EN 60695-10-2

70 °C



#### STANDARDS/APPROVALS

